



FOR RENT IN PORRENTRUY: 33 M² OFFICE WITH KITCHEN

Route de Coeuve 2 | 2900 Porrentruy | Reference : 5783852

CHF 400.-/month, incl. ch.



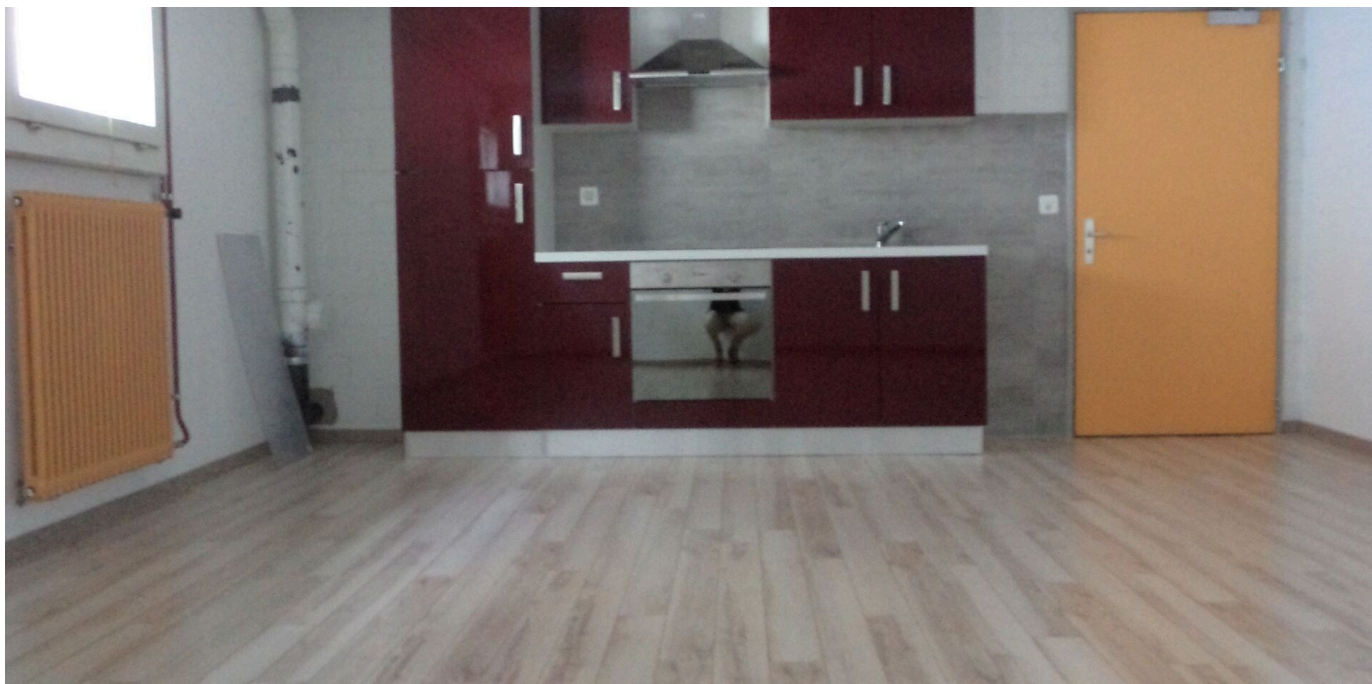
TABLE OF CONTENTS

Description page	3
Page location and distances	5
Detailed characteristics and conveniences	6
Big pictures	8



FOR RENT IN PORRENTRUY: 33 M² OFFICE WITH KITCHEN

CH-2900 Porrentruy | Route de Coeuve 2 | **CHF 400.-/month, incl. ch.**



Rental of a room/office in a building with elevator, ideally located in Porrentruy.

CHARACTERISTICS

- Area: 33 m²
- Fittings: Small kitchen included
- Utility: Could be suitable as a music room for example
- Monthly rent: CHF 400.- including utilities (including electricity)
- Availability: From July 1, 2026 or to be agreed (possibility of renting before this date)

Reference: **5783852**

Type: **Office space**

Availability: **To agree**

room: **1**

Location floor: **1st basement**

Parking spaces: **Yes, optional**

Heating installation: **Floor**

Address: Route de Coeuve 2, 2900 Porrentruy

Interested? Please contact us for more information or to arrange a visit.

MUNICIPALITY

All information about the municipality can be found at: www.porrentruy.ch

ACCESS

By road or rail

SHOPS/STORES

Many shops are located in the town, a shopping center is also located in Porrentruy





LEISURE TIME

A number of sports and cultural associations are active in the area

GROUND FLOOR

The shared WC is located on this floor.

1ST FLOOR

The premises are located in the basement

CONTACT FOR VISITING

Mrs. Cassandra Marques

E-mail : cassandra@instantimmo.ch

Mobile : 078 735 39 03



LOCATION

CH-2900 Porrentruy | Route de Coeuvre 2 | **CHF 400.-/month, incl. ch.**

SITUATION

The building is located in Porrentruy, in a mixed-use area combining professional and residential activities. It benefits from a strategic location, close to the main road, offering excellent accessibility. Parking spaces in front of the building and a collective garage make parking easy.

			
Station	-	3 min.	1 min.
Public transports	-	1 min.	1 min.
Freeway	-	-	5 min.
Secondary school	-	7 min.	2 min.
Secondary II school	-	5 min.	1 min.
Stores	-	3 min.	1 min.
Post office	-	3 min.	1 min.
Bank	-	3 min.	1 min.
Restaurants	-	3 min.	1 min.
Park / Green space	-	5 min.	1 min.



CHARACTERISTICS

CH-2900 Porrentruy | Route de Coeuvre 2 | **CHF 400.-/month, incl. ch.**

CHARACTERISTICS

Availability	To agree	Heating installation	Floor
Type	Office space	Condition of the property	Good
Reference	5783852	Standing	Standard
room	1	Total surface	~ 33 m²
Number of toilets	1	Parking spaces	Yes, optional
Number of kitchens	1	Interior parking	not included
Location floor	1st basement	Open/closed area	closed
Number of offices	1		

CONVENIENCES

NEIGHBOURHOOD

- | | | |
|-------------------|-------------------------|-------------------------|
| - City centre | - Bus stop | - Museum |
| - Shops/Stores | - Highway entrance/exit | - Theatre |
| - Bank | - Sports centre | - Concert hall |
| - Post office | - Public swimming pool | - Hospital / Clinic |
| - Restaurant(s) | - Tennis centre | - Doctor |
| - Pharmacy | - Indoor swimming pool | - Heavy vehicles access |
| - Railway station | - Bike trail | - SBB access |

OUTSIDE CONVENIENCES

- | | | |
|-----------|----------------------------|-------------------------|
| - Parking | - Visitor parking space(s) | - Built on even grounds |
| - Garage | - From road | |

INSIDE CONVENIENCES

- | | | |
|-----------------------|-------------------|------------------|
| - Wheelchair-friendly | - Garage | - Double glazing |
| - Lift/elevator | - Guests lavatory | - Bright/sunny |

EQUIPMENT

- Kitchenette



CONDITION

- Good

STYLE

- Classic



INTERIOR VIEW

